

November 03, 2016

Michael Anania
NYS School for the Deaf
401 Turin St
Rome, NY 13440

RE: Project: NYSD - BLDG 15-2nd FLOOR
Pace Project No.: 10366451

Dear Michael Anania:

Enclosed are the analytical results for sample(s) received by the laboratory on October 14, 2016. The results relate only to the samples included in this report. Results reported herein conform to the most current, applicable TNI/NELAC standards and the laboratory's Quality Assurance Manual, where applicable, unless otherwise noted in the body of the report.

Samples, in the electronic data deliverable (EDD) that accompanied this report, were flagged yellow if they exceeded the NYSDOH 15 ppb action level.

The space designated for the sampler on the chain of custody (COC) indicates if these samples were collected by Pace Analytical or were collected by the school district and just relinquished to Pace Analytical.

If you have any questions concerning this report, please feel free to contact me.

Sincerely,

Amanda Albrecht
amanda.albrecht@pacelabs.com
Project Manager

Enclosures

REPORT OF LABORATORY ANALYSIS

This report shall not be reproduced, except in full,
without the written consent of Pace Analytical Services, LLC.

SAMPLE SUMMARY

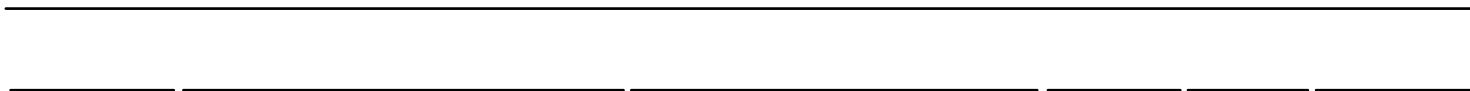
Project: NYSD - BLDG 15-2nd FLOOR

Pace Project No.: 10366451

Lab ID	Sample ID	Matrix	Date Collected	Date Received
10366451001	Room 2-1/ Sink	Water	10/08/16 02:39	10/14/16 09:45
10366451002	Room 2-7/ Sink	Water	10/08/16 02:40	10/14/16 09:45
10366451003	Room 2-8/ Sink	Water	10/08/16 02:41	10/14/16 09:45
10366451004	Room 2-8A/ Sink	Water	10/08/16 02:41	10/14/16 09:45
10366451005	Room 2-26/ Fountain/Upper	Water	10/08/16 02:43	10/14/16 09:45
10366451006	Room 2-26/ Fountain/Lower	Water	10/08/16 02:43	10/14/16 09:45
10366451007	Room 2-13/Sink	Water	10/08/16 02:45	10/14/16 09:45
10366451008	Room 2-11/Sink	Water	10/08/16 02:46	10/14/16 09:45
10366451009	Room 2-18/Left Sink	Water	10/08/16 02:47	10/14/16 09:45
10366451010	Room 2-18/Right Sink	Water	10/08/16 02:47	10/14/16 09:45
10366451011	Room 2-18A/Left Sink	Water	10/08/16 02:49	10/14/16 09:45
10366451012	Room 2-18A/Right Sink	Water	10/08/16 02:50	10/14/16 09:45
10366451013	Room 2-20/ Sink	Water	10/08/16 02:51	10/14/16 09:45
10366451014	Room 2-22/ Sink	Water	10/08/16 02:53	10/14/16 09:45

REPORT OF LABORATORY ANALYSIS

This report shall not be reproduced, 2 of 8 pages



ANALYTICAL RESULTS

Project: NYSD - BLDG 15-2nd FLOOR

Pace Project No.: 10366451

Sample: Room 2-13/Sink		Lab ID: 10366451007	Collected: 10/08/16 02:45	Received: 10/14/16 09:45	Matrix: Water			
Parameters	Results	Units	Report Limit	DF	Prepared	Analyzed	CAS No.	Qual
200.8 MET ICPMS, DW		Analytical Method: EPA 200.8						
Lead	5.2	ug/L	0.10	1		10/22/16 17:27	7439-92-1	
Sample: Room 2-11/Sink		Lab ID: 10366451008	Collected: 10/08/16 02:46	Received: 10/14/16 09:45	Matrix: Water			
Parameters	Results	Units	Report Limit	DF	Prepared	Analyzed	CAS No.	Qual
200.8 MET ICPMS, DW		Analytical Method: EPA 200.8						
Lead	37.4	ug/L	0.10	1		10/22/16 17:30	7439-92-1	
Sample: Room 2-18/Left Sink		Lab ID: 10366451009	Collected: 10/08/16 02:47	Received: 10/14/16 09:45	Matrix: Water			
Parameters	Results	Units	Report Limit	DF	Prepared	Analyzed	CAS No.	Qual
200.8 MET ICPMS, DW		Analytical Method: EPA 200.8						
Lead	11.2	ug/L	0.10	1		10/22/16 17:31	7439-92-1	
Sample: Room 2-18/Right Sink		Lab ID: 10366451010	Collected: 10/08/16 02:47	Received: 10/14/16 09:45	Matrix: Water			
Parameters	Results	Units	Report Limit	DF	Prepared	Analyzed	CAS No.	Qual
200.8 MET ICPMS, DW		Analytical Method: EPA 200.8						
Lead	41.1	ug/L	0.10	1		10/22/16 17:33	7439-92-1	
Sample: Room 2-18A/Left Sink		Lab ID: 10366451011	Collected: 10/08/16 02:49	Received: 10/14/16 09:45	Matrix: Water			
Parameters	Results	Units	Report Limit	DF	Prepared	Analyzed	CAS No.	Qual
200.8 MET ICPMS, DW		Analytical Method: EPA 200.8						
Lead	19.6	ug/L	0.10	1		10/22/16 17:34	7439-92-1	
Sample: Room 2-18A/Right Sink		Lab ID: 10366451012	Collected: 10/08/16 02:50	Received: 10/14/16 09:45	Matrix: Water			
Parameters	Results	Units	Report Limit	DF	Prepared	Analyzed	CAS No.	Qual
200.8 MET ICPMS, DW		Analytical Method: EPA 200.8						
Lead	78.0	ug/L	0.10	1		10/22/16 17:36	7439-92-1	

REPORT OF LABORATORY ANALYSIS

This report shall not be reproduced, except in full,
without the written consent of Pace Analytical Services, LLC.

ANALYTICAL RESULTS

Project: NYSD - BLDG 15-2nd FLOOR

Pace Project No.: 10366451

Sample: Room 2-20/ Sink

Lab ID: 10366451013

Parameters

QUALITY CONTROL DATA

Project: NYSD - BLDG 15-2nd FLOOR

Pace Project No.: 10366451

QUALIFIERS

Project: NYSD - BLDG 15-2nd FLOOR

Pace Project No.: 10366451

DEFINITIONS

DF - Dilution Factor, if reported, represents the factor applied to the reported data due to dilution of the sample aliquot.

ND - Not Detected at or above adjusted reporting limit.

J - Estimated concentration above the adjusted method detection limit and below the adjusted reporting limit.

MDL - Adjusted Method Detection Limit.

PQL - Practical Quantitation Limit.

RL - Reporting Limit.

S - Surrogate

1,2-Diphenylhydrazine decomposes to and cannot be separated from Azobenzene using Method 8270. The result for each analyte is a combined concentration.

Consistent with EPA guidelines, unrounded data are displayed and have been used to calculate % recovery and RPD values.

LCS(D) - Laboratory Control Sample (Duplicate)

MS(D) - Matrix Spike (Duplicate)

DUP - Sample Duplicate

RPD - Relative Percent Difference

NC - Not Calculable.

SG - Silica Gel - Clean-Up

U - Indicates the compound was analyzed for, but not detected.

N-Nitrosodiphenylamine decomposes and cannot be separated from Diphenylamine using Method 8270. The result reported for each analyte is a combined concentration.

Pace Analytical is TNI accredited. Contact your Pace PM for the current list of accredited analytes.

TNI - The NELAC Institute.

LABORATORIES

PASI-M Pace Analytical Services - Minneapolis

REPORT OF LABORATORY ANALYSIS

This report shall not be reproduced, except in full,
without the written consent of Pace Analytical Services, LLC.

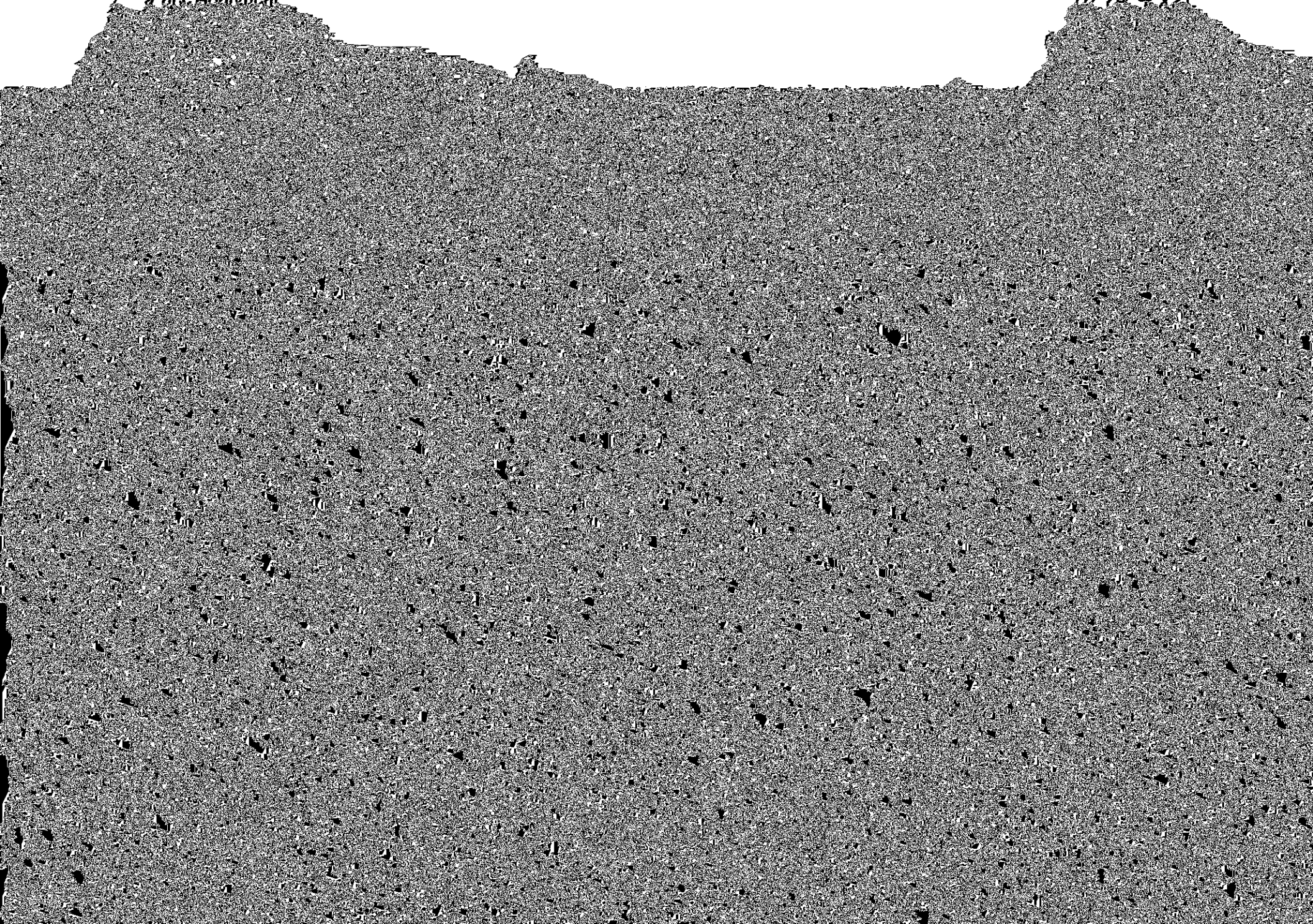




CHAIN-OF-CUSTODY / Analytical Request Document

The Chain-of-Custody is a LEGAL DOCUMENT. All relevant fields must be completed accurately.

10366451



Temp OK

10/19/16